

Canterbury- West Coast Division

Annual Report
2023





Kate Reid
Chairperson

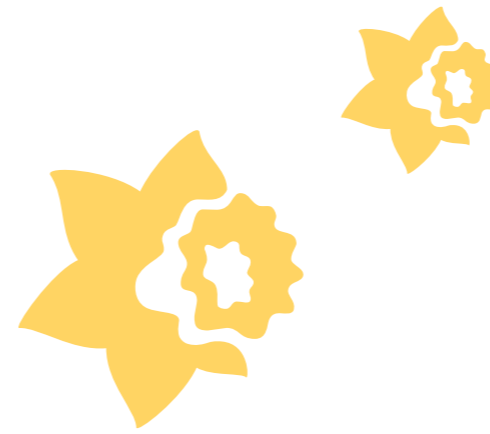
Chairperson's Report

This financial year was refreshingly more progressive than the last two, as Covid's stronghold in the community diminished, enabling the Cancer Society to function more positively in its role of lessening the impact of cancer in our community. Challenges to diagnosing, treating and supporting people on the cancer journey have continued to present themselves, however, due to the structural reforms and workforce issues within our health services – issues which have been regularly reported on in the media.

The Cancer Society has an important advocacy role in this context whilst our staff and volunteers continue to give of their very best to meet these challenges, keeping people and their families at the heart of what we do.

In last year's report I welcomed Nicola Coom as our Chief Executive. She has had a very busy and positive year. Her energy and enthusiasm for the Cancer Society's mahi have been inspiring and also appreciated at a national level where she has a very positive working relationship with her colleagues across Aotearoa. Establishing and maintaining community connections/partnerships and ensuring a high calibre of staff is employed and managed by our impressive senior leadership team is resulting in the Cancer Society's Canterbury-West Coast Division being in good heart.

The National Board of the Cancer Society New Zealand's review of the structure of our organisation (Anga Whakamua) project has come to an end. The work undertaken in this project has enabled us to see clear benefits in aligning with our neighbouring divisions more closely than we have done previously. We have always had a positive working relationship with them, as people move across the divisions when receiving treatment, however we can strengthen this further and have this potential at the forefront of our strategic plan.



Richard Green's chairmanship of the building subcommittee has been a significant commitment and excellent progress made with the new build on Langdons Road during the year means that we are nearly there! The TSA Project Management team and head contractor Cook Brothers Construction have been a great team to work with on this exciting project.

At last year's AGM we welcomed Julie Millar as Treasurer and Chair of the Audit and Risk Committee. Julie has been a Partner at BDO Christchurch since 1990 and has extensive board experience utilising her financial skills. She has played a key role over this year. I wish to thank Julie and the other members of our executive committee for their invaluable support and strategic vision for our division, giving their time willingly to ensure the resources are available to support the work of our CEO, staff and volunteers.

Thank you to the ANZ Bank - principal sponsor of Daffodil Day and major sponsor of the Cancer Society of New Zealand throughout the year.

Kind regards,

Kate Reid



The Canterbury-West Coast Senior Leadership Team



The Canterbury Cancer Centre in October 2022



ANZ staff collecting in Rangiora for Daffodil Day



Nicola Coom
Chief Executive



Chief Executive's Report

Leading this Division is a true honour and I couldn't be prouder of the collective achievements made possible by our staff, volunteers, cancer and business communities. These achievements include a new building, a joint venture, new technology, new partnerships, a Daffodil Day record, more families supported and a collaboration with our Otago Southland Division.

The 2022/23 year was all about resuming our face-to-face support post-pandemic and finding our new normal. In doing so we have experienced a significant increase in the demand for our services particularly on the West Coast, the Waimakariri District, Mid and South Canterbury. A record Daffodil Day appeal meant that we could offer some additional resources to respond to this and we are hoping the same will happen this year. This increase in demand is going to continue as the rate of cancer is predicted to double in the next decade. This means we have been paying particular attention to how we maximise our workforce, donations and prepare for a future of more cancer.

One of our responses to this is to align with the Otago / Southland Division. We believe the best response to these challenges is a joint one. Our families move throughout the South Island Te Wai Pounamu, so it makes sense that we work as one. We are currently in the process of operationally aligning ourselves across Southland, Otago, Canterbury, and the West Coast for the benefit of our families. In a short space of time, both staff and families have already started to benefit from this.

Our families have been telling us that they need easier access to pre- and post-cancer rehabilitation and just recently the University of Otago published research sharing that many cancer survivors face a range of issues after treatment, but support for them is limited. We have been working closely with St Georges Cancer Care Centre and earlier this year signed a memorandum of understanding to launch a joint venture to address this.

I am pleased to share with you that Encompass Health will be open from October 2023, operating out of the Canterbury Cancer Centre providing much-needed psychosocial, physiotherapy, exercise physiology, lymphedema therapy, group fitness classes and more. You can find out more about this new offering at www.encompasshealth.org.nz

One of my favourite parts of my role is getting out and about and meeting those who access our services, staff, clinicians, donors, and the Trusts and communities that support us to do the great work we do. It is through hearing directly from you that we can remain relevant to the needs that are out there. Spending a day in our driving service driving patients to and from their treatment recently was humbling, and I came away filled with ideas and opportunities to improve the experience. Thank you to everyone who has spent time sharing your ideas with me.

In this reporting period, Te Aho o Te Kahu Cancer Control Agency released the Cancer Prevention Report, and this has become a key document driving our cancer prevention work. Notably this report states that up to half of all cancers are preventable and that a significant proportion of deaths and suffering due to cancer can be avoided. We believe prevention is the ideal in cancer control and have committed to increasing our investment in this area this year.

A key highlight has certainly been watching the new Canterbury Cancer Centre come to life. I would like to acknowledge our building Contractor – Cook Brothers, we've worked alongside you day after day, and we're going to miss you! TSA, particularly Nic Hobbs our Project Manager and Wilson and Hill for designing a world-class facility. We were humbled that our accommodation block could be blessed by Ngāi Tūāhuriri, this was particularly special given that the late Dame Aroha Reriti-Crofts had a relationship with the Cancer Society and turned the soil of this site. We are very much looking forward to opening the centre to the public and welcoming everyone to it in the coming months. We view this as a centre built by the community, for the community – everyone is welcome.

I would like to end by acknowledging the clinicians and their support teams for all that they are doing to diagnose and treat our families. The workforce challenges, health reforms, and increasing rates of cancer continue all around you and you keep turning up for our families – thank you, we appreciate you.

Please stay connected with us through our digital platforms and communication channels. We have ambitious plans for the 2023/24 year and look forward to sharing these with you.

Kind regards,

Nicola Coom
Chief Executive



Natasha Hurst doing her second Jump for Cancer fundraiser



Relay For Life, Timaru, March 2023



Jackie Claridge and Amanda Dodd promoting Daffodil Day in Selwyn

OUR MAHI Supportive Care



Anita Albert with the community transport vehicle funded by Cook Brothers Construction



Christine Dwyer, Craig Watson and Aimee Cosgrove joined the Division in 2023

In the financial year the team was very sorry to farewell Anita Albert our Supportive Care Manager as she moved north to be closer to whānau. Anita worked hard to begin the journey to a more connected and culturally mature Supportive Care Team across Canterbury West Coast.

Ko Craig Watson tōku ingoa, I had the honour of being offered the Pou Whirinaki, Service Delivery Manager, role here at the Canterbury West Coast Division of the Cancer Society. What an awesome bunch of wahine toa (yes all women) I get to look after! The tima continue to serve our communities across the motu in a way that is personalised, empathetic and supportive of their individual journeys.

Increasingly we are seeing people who are feeling lost or ignored by the stretched health system and therefore we were pleased and

confident in realigning the titles of our Supportive Care workers to Cancer Navigators. Our Cancer Navigators continue to be available to help everyone affected by cancer to ensure their journey is the best possible one it can be.

We are all excited about the move later in the year to the new Canterbury Cancer Centre. Our accommodation team have been working behind the scenes to ensure that not only the transition for our residents is smooth but that the new facility offers a new and modern approach to people's stay in Christchurch.



Craig Watson
Service Delivery Manager



Ōtautahi-based kaimahi welcoming Lisia Ratima-Livesley to the team



Maree Yaxley and Gail Brewerton

Following a routine mammogram in late 2022, Gail Brewerton was diagnosed with early-stage cancer.

"The whole way through from when I was having my biopsies, my Cancer Society Cancer Navigator Maree Yaxley kept in regular contact," Gail says.

Gail's Story

"I didn't feel like I was on my own - all I had to do was text Maree and she was there."

Gail needed to make multiple trips from her home on the West Coast to Christchurch for a range of investigative treatments including biopsies, an MRI, an appointment with a specialist and surgery to remove both of her breasts (a bilateral mastectomy). Each time Gail stayed at Daffodil House.

"Daffodil House is a godsend, having somewhere to stay that's free makes a huge difference when you live away from a main centre," Gail says.

Maree says that the aim was to get the best outcome for Gail and that this was achieved by working collaboratively across the Cancer Society teams on the West Coast and in Christchurch to ensure that Gail was supported at each stage. In addition to providing free accommodation and transport for Gail, the Cancer Society supplied

food vouchers for easy to prepare meals post-surgery and breast care pillows to help make her travel more comfortable.

"I think it's amazing - I'm just blown away that the service is there and that it is accessible," Gail says. *"The service offered by the Cancer Society is gold standard."*

"It's hard enough to get your head around what is wrong with you, your headspace isn't that great - so it is amazing to have people there to organise things so you have less to think about," she says.

Gail's advice to others is to stay up to date with mammograms. *"I believe it has saved my life,"* she says. *"I didn't have a lump, just a change in cells so there was nothing to feel or notice."*

"I'm so thankful that we've picked it up early enough and now I'm home and feeling brilliant and healing really well," Gail says.

Our impact

Across the Canterbury-West Coast region during the year:



2,500

Families were helped to navigate their cancer journey



6,000+

Drives to transport patients to their cancer treatment appointments



12,000

Nights of free accommodation provided



Phoebe and Jacinda at Kite Day New Brighton 2023



Martin Witt, Lucy Elwood, Associate Health Minister Ayesha Verrall and Shayne Nahu at Parliament

Cancer Prevention

2022 will be remembered in the Cancer Society as the year in which the country passed its groundbreaking tobacco legislation.

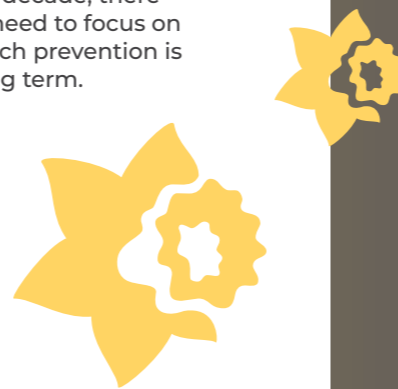
In December, the Government adopted measures that will see tobacco retailing substantially reduced, tobacco products limited only to those containing very low levels of nicotine and from 2027 those born after 2009 will not be allowed to be sold tobacco - the Smokefree Generation.

For the Canterbury West Coast team, this milestone comes only after many years of planning and collaboration from all those working in tobacco control. Tobacco is a major contributor to health inequities between Māori and Pākehā – taking these steps will have a lasting impact but will rely on organisations like ours remaining vigilant and holding governments to account in the years ahead to ensure all measures are fully adopted.

Our learnings from working in this space are also bringing value to our wider cancer prevention work and in 2022 we started to consider how we approach issues such as community awareness around alcohol and cancer and the influence of fast-food marketing on young people's food choices.

Allied to this, we continued to strengthen our relationship with local councils, running a candidate's survey in the run-up to the October election which suggested good support for our working together on issues such as alcohol, sun protection and vaping.

Finally in 2022 we adopted the term cancer prevention rather than health promotion to describe our work. With the rate of cancer diagnoses predicted to rise by 50% over the next decade, there is undoubtedly a need to focus on those areas in which prevention is possible in the long term.



Martin Witt
Manager Cancer Prevention

Fundraising



Heather Locke
Manager- Fundraising, Communications and Relationships

Wow, it has been a busy year! I would like to mihi the Fundraising and Communications Team for their phenomenal work in one of Cancer Society Canterbury West-Coast Division's biggest transitional periods.

We had several projects, the largest being the More Precious campaign, which helped fund all of the items our new Canterbury Cancer Centre needed for our 50 rooms of accommodation. Thanks to the community's efforts, the campaign (www.moreprecious.co.nz) raised hundreds of thousands of dollars and allowed us to furnish the building to a standard worthy of its guests.

Our events this year were triumphant successes thanks to our wonderful participants. Daffodil Day raised a whopping **\$810,000**. Our South Canterbury Relay For Life was a smashing success and raised over **\$85,000**. The Tranz Alpine Scooter Safari, as always, was a bonkers wild ride and made a record **\$350,000**. And our very first Too Many Cooks dinner with MC Paul Ego brought in **\$67,000**. Amazing!

We've had some unprecedented generosity from the grant sector this year. Pub Charity, Kiwi Gaming Trust, New Zealand Community

Trust (NZCT), Aoraki Foundation, Bidwill Trust Hospital, Lois McFarlane Charitable Trust, Aotearoa Gaming Trust, Mainland Foundation, Jones Foundation, One Foundation, Lion Foundation, JI Urquhart Family Trust, Bidfood, Perpetual Guardian, The Trust Community Foundation (TTCF), and the West Coast Community Trust have collectively gifted us with over **\$1 million** for capital and operational costs. We are humbled and honoured by their support and belief in our work - we simply could not do what we do without them.

We'd like to give a huge shout-out to all of our supporters. We appreciate your gifts of time, sweat and ingenuity to raise funds on our behalf to help us provide the best cancer outcomes for whānau. We see you.

We love your mahi.



Riders on the Tranz Alpine Scooter Safari, May 2022



Chefs Andrew Brown, Darren Wright, Lucy Ayres and Jimmy McIntyre at Too Many Cooks in March 2023

Partnerships



Janice Porter-Hoare
Manager - Partnerships

In the past year we've teamed up with some fantastic corporate and organisational partners that are helping to move the Cancer Society towards a more diverse funding model. But it's not just about the money – beyond the financial benefits, these partnerships hold the potential to amplify our impact on the families and communities we serve.

Working together with businesses and organisations that are committed to our mission to lessen

the impact of cancer helps us reach new networks, increases innovation and sustainability opportunities, and leads to financial efficiencies.

Not only are we looking at a boost to our financial stability, but to mix business with purpose to create a more inclusive and resilient future.

With partners committing their support for three years, this allows the Cancer Society to meet head on the needs of families across the South Island.



Partner Q & A with Parks

What inspired Parks to support the Cancer Society with an annual fundraising golf day and by sponsoring a patient room at the new Canterbury Cancer Centre?

"Parks had been wanting to partner with a charity for some time but wanted it to be a meaningful collaboration and this is a great fit for us as everyone at some point has been affected by cancer," Parks General Manager Stu Gerring says.

"A large portion of Parks business is helping people, whether it be responding to an accident or assisting with a breakdown, so we

see this as another way to help those in need when they need it most, which is exactly what the Cancer Society does on a daily basis," he says.

"We felt that partnering with the Cancer Society would have the most impact on others and help us give back too, which was important."

"The Canterbury Cancer Centre is such an amazing facility and initiative bringing all those services under one roof and we're proud to have been a part of making it happen," Stu says.

What impact do you think partnering with the Cancer Society to develop programmes to provide support and wellbeing to staff will have on your workforce?

"The Cancer Society's mission aligns with our company values. We employ a diverse range of people, and the Cancer Society are similarly dealing with a diverse range of people every day," Stu says.

"So for us, we felt like this gives a meaningful message to our staff who have all had colleagues or family and friends affected by cancer in their lives. Additionally, it means we are more aware of the support and services that can be provided by the Cancer Society if our staff are ever in need of those."



Parks golf day fundraiser



Janice Porter-Hoare with Stu Gerring, Jade Britain and Ashleigh Murray from Parks

Our People



Meredith Woodsford
People Experience Manager

We recognise that investing in the wellbeing, growth and engagement of our workforce is not only beneficial to our people but also contributes to our overall success and sustainability, and the quality of support provided to whānau. Our focus for much of this year has therefore been on the foundational aspects of these, ensuring we have everything in place to keep our people safe and healthy and able to perform their roles successfully.

Wellbeing remains a top priority, and in addition to revamping our health and safety systems, we have introduced a more comprehensive wellbeing programme which offers a wider range of wellness resources, workshops and personal support. We have also revamped the onboarding process, ensuring that new kaimahi and kaitūao feel welcomed and connected from day one.

As we reflect on the mahi of the past year, we're also excited about the future possibilities. The People Experience team remains committed to adapting, innovating and continuously improving the kaimahi and kaitūao journey, enhancing our support systems and create an enriching workplace experience for all. Thank you to each kaimahi, kaitūao and other individual who has contributed to our People Experience initiatives over the year. Together we will continue to shape an environment where our people can thrive, collaborate and find fulfilment in their roles. Tēnā rawa atu koutou, kindest regards to you all.

"We are grateful to our incredible team of volunteers who have contributed their time and skills to enhance our mahi and the support we provide to whānau and communities, across the region."

When people come to work here, we want them to feel valued, safe and respected, regardless of whether they are kaimahi (employee staff) or kaitūao (volunteer), and this year marked a change in how we do this, with the establishment of the People Experience team in September 2022.

This shift from the more traditional approach to HR and volunteering, which has historically been centred around administration, compliance and transactional activities, has enabled a more people-centric approach that considers the needs, aspirations and values of our entire workforce.



Meet Sophie, one of our volunteers!

Despite working as a teacher at Cobham Intermediate School in Christchurch, Sophie Crawford still finds time to volunteer for the Cancer Society in Ōtautahi.

"I have donated to the Cancer Society for as long as I can remember since I lost my grandfather to cancer," Sophie says.

After reading that the Cancer Society was looking for more volunteers, Sophie signed up and has since helped with a variety of Cancer Society events and activities. As well as volunteering as a collector on Daffodil Day, Sophie assisted with bunching and packaging fresh daffodils the weekend beforehand.

"During December I volunteered to do gift wrapping at Merivale Mall," Sophie says.

"Every little bit counts – just do what you can. Even if you're working five days a week, see if you can make time to give back," she says.

"Not everyone can afford to donate money but an hour of your time is just as valuable," Sophie says.



Volunteers Linda and Norman Wilkins

Business Services



Bob King
Business Services Manager

The year to 31 March 2023 has provided the Division with a period of stability given the challenges of the previous two financial years.

The focus has been on the ongoing sustainability of the Division as we invest in the future through the new Cancer Centre on Langdons Road and investment in technology to both increase operational efficiency and to ensure we remain connected with each other, the people and whānau we support and the communities that continue to support our services.

The Division recorded a surplus for the year. While this is a pleasing result, this needs to be tempered by the fact that the income driving the surplus is committed to funding the building of the Canterbury Cancer Centre.

Rebuild monies include **\$3.95M** funding from the Government's Shovel Ready Scheme, together with **\$800K** in grants. During the year, the Trust Board increased the loan to the Division to support the financing of the Christchurch Building Project.

Fundraising income for the year has shown a recovery from the impact of COVID-19 experienced in recent years. Likewise, investment income is improving with interest rates increasing and we are fortunate that Divisional finances continued to be well supported by bequest income. We are grateful to those in our communities who choose to include the Cancer Society in their will, leaving a legacy that will support our ongoing work across all areas of the Society.

The Division remains vigilant as to how and where we spend our funds and we have kept spending below budgeted levels. Savings were achieved without any reduction in access or quality of our service provision.



Progress on the new Canterbury Cancer Centre, February 2023

Grants and Sponsorships

Grants and sponsorships received during the financial year.

The Cancer Society Canterbury-West Coast Division would like to acknowledge the following organisations and trusts for grants and sponsorship contributions received during the 2022-2023 financial year.

Organisation / Trust	Purpose of Grant / Sponsorship	Amount
Aoraki Foundation	Contribution to Canterbury Cancer Centre – room sponsorship	\$30,000
Aotearoa Gaming Trust	Contribution to operating costs - laundry	\$10,000
Baker Tilly	Annual sponsorship of room in Canterbury Cancer Centre	\$7,500
Bidwill Trust Hospital	Canterbury Cancer Centre build contribution	\$50,000
Harcourts Foundation	SunSmart Summer Events programme sponsorship	\$15,000
Jl Urquhart Family Trust	Annual contribution to operating costs	\$50,000
Jones Foundation	Contribution to operating costs	\$10,000
Kiwi Gaming Trust	Cost of curtains for Canterbury Cancer Centre	\$96,955
Lion Foundation	Contribution to operating costs	\$15,000
Lois McFarlane Charitable Trust	Contribution to operating costs	\$15,000
Mainland Foundation	AV equipment for Canterbury Cancer Centre	\$17,899
MediaWorks Foundation	Sponsored media content promoting Canterbury Cancer Centre	\$180,493
New Zealand Community Trust (NZCT),	Canterbury Cancer Centre build contribution	\$400,000
One Foundation	Purchase of IT equipment	\$15,000
Parks	Annual sponsorship of room in Canterbury Cancer Centre	\$7,500
Perpetual Guardian	Contribution to heat pump for South Canterbury Centre	\$725
Powell Fenwick	Contribution to Canterbury Cancer Centre – furniture and landscaping	\$20,000
Pub Charity	Canterbury Cancer Centre build and fit-out contribution, including solar panels	\$400,000
The Trust Community Foundation (TTCF)	Cancer Navigator salary contribution	\$35,360
The West Coast Community Trust	Contribution to Canterbury Cancer Centre	\$5,000

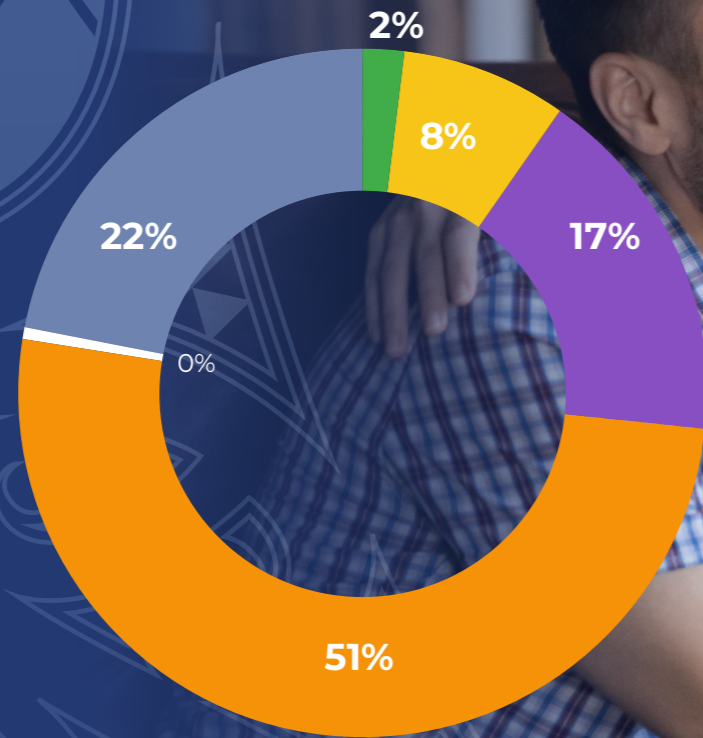
Grants made by the Cancer Society Canterbury-West Coast

During the 2022-2023 financial year, the Cancer Society's Canterbury-West Coast Division paid levies to the Cancer Society of New Zealand and invested significantly in cancer research, as follows:

Organisation / Person	Purpose of Grant / Sponsorship	Amount
National Levies to the Cancer Society of New Zealand		
	Scientific Cancer Research	\$198,319
	Operating and Project Levy	\$350,288
Cancer Society Tissue Bank		
Annual contribution from The Tissue Bank Research Trust	Operational costs of the Christchurch Hospital-based Cancer Society Tissue Bank	\$69,000
Local Research Fellowship Grant		
Jessica Allan	A feasibility study investigating the potential of individualised exercise prescription to improve outcomes for cancer patients from diagnosis through to end-of treatment phase	\$25,000 per year for 3 years
Research and Professional Development grants		
Dr J Gullam	Grant for research project	\$6,005
Dr G Wiggins	Travel grant to present research relating to genetics and endometrial cancer	\$2,500
Dr B Simcock	Research into inequities in Gynaecological Cancer	\$5,222
Summer Studentships		
Turner & Curtis	Future Health Researcher Programme	12,000
Dr G Wiggins	Investigating the impact of germline copy number variation on endometrial cancer risk	6,000

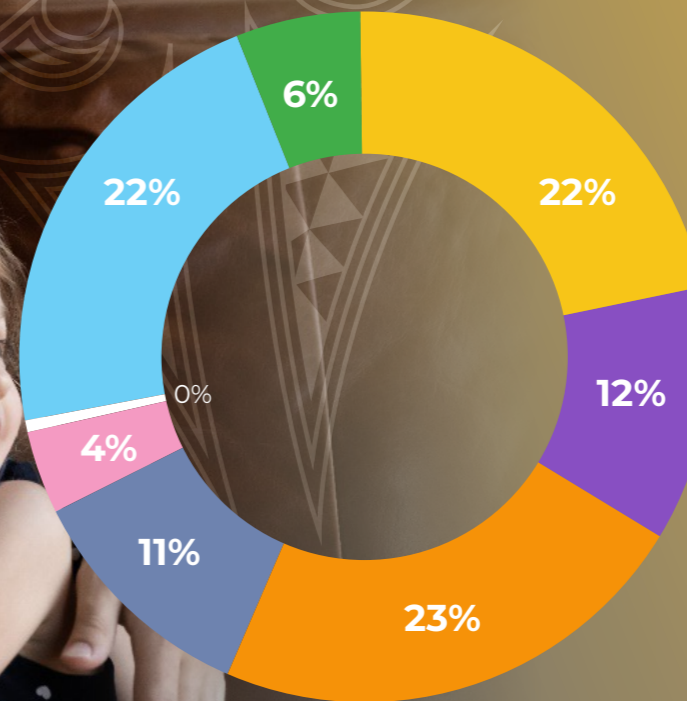
Our Finances

Income for the year ended 31st March 2023
(Society only)



- Sundry
- Accommodation
- Bequests
- Donations & Grants
- Investment
- Other Fundraising

Expenses for the year ended 31st March 2023
(Society only)



- Volunteers
- Accommodation
- Administration
- Fundraising
- Health Promotion
- Research
- Sundry
- Supportive Care

Income analysis for the year ending 31st March 2023
(Society only)



	\$	%
Accommodation	884,336	8.3%
Bequests	1,764,706	16.5%
Donations & Grants	5,491,407	51.4%
Investment	41,602	0.4%
Other Fundraising	2,329,784	21.8%
Sundry	177,895	1.7%
Total income	10,689,730	100.0%

Expense analysis for the year ending 31st March 2023
(Society only)



	\$	%
Accommodation	1,329,416	21.7%
Administration	768,689	12.5%
Fundraising	1,405,309	22.9%
Health Promotion	674,766	11.0%
Research	249,824	4.1%
Sundry	6,769	0.1%
Supportive Care	1,354,298	22.1%
Volunteers	351,341	5.7%
Total	6,140,412	100.0%

The summary statement of financial performance for the reporting entity Cancer Society of New Zealand, Canterbury-West Coast Division Inc. ("The Society") is presented above. Please note that these accounts are unaudited at the date of publication, pending completion of the audit by Ernst & Young.

Once audited, the full financial statements of the Society and its controlled entities, The Cancer Society of New Zealand Canterbury-West Coast Trust Board ("The Trust Board") and The Tissue Bank Research Trust ("The Trust"), together known as "The Group" will be available on request and can also be accessed via the Charities Services website, www.charities.govt.nz (Charities Commission No CC10981).



Our Centres

Christchurch Centre

74 Langdons Road, Papanui, Christchurch 8053
P: 03 379 5835 E: contact@cancercwc.org.nz

North Canterbury Centre

43 Church St, Rangiora 7400
P: 0800 226 695 E: northcanty@cancercwc.org.nz

South Canterbury Centre

32 Memorial Avenue, PO Box 682, Timaru 7940
P: 03 688 0124 E: southcanty@cancercwc.org.nz

Mid Canterbury Centre

122 Kermode Street, PO Box 296, Ashburton 7740
P: 03 307 7691 E: midcanty@cancercwc.org.nz

West Coast Centre

98 High Street, PO Box 81, Greymouth 7840
P: 03 768 9557 E: westcoast@cancercwc.org.nz

Selwyn Centre

6B Kidman Street, PO Box 25, Rolleston 7643
P: 03 925 9708 E: selwyn.centre@cancercwc.org.nz



Cancer Society

Te Kāhui Matepukupuku
o Aotearoa